



# ADJUSTABLE PARAPET SYSTEM 2024



Made for Outdoor Life



**PALMIYE**







**MADE FOR  
OUTDOOR LIFE**





At Palmiye, we believe in enhancing people's lives through innovative outdoor solutions, making daily life easier and better. For over 25 years, we have been building innovative systems which are at the crossroads of art and science. Engineering and creativity. Global knowledge and client focus. Craft, quality, freedom of choice, and custom-made solutions that are sustainable. We do this in ways that endure and stand the test of time. Reflecting our commitment to creating a lifestyle

## **Made For Outdoor Life.**



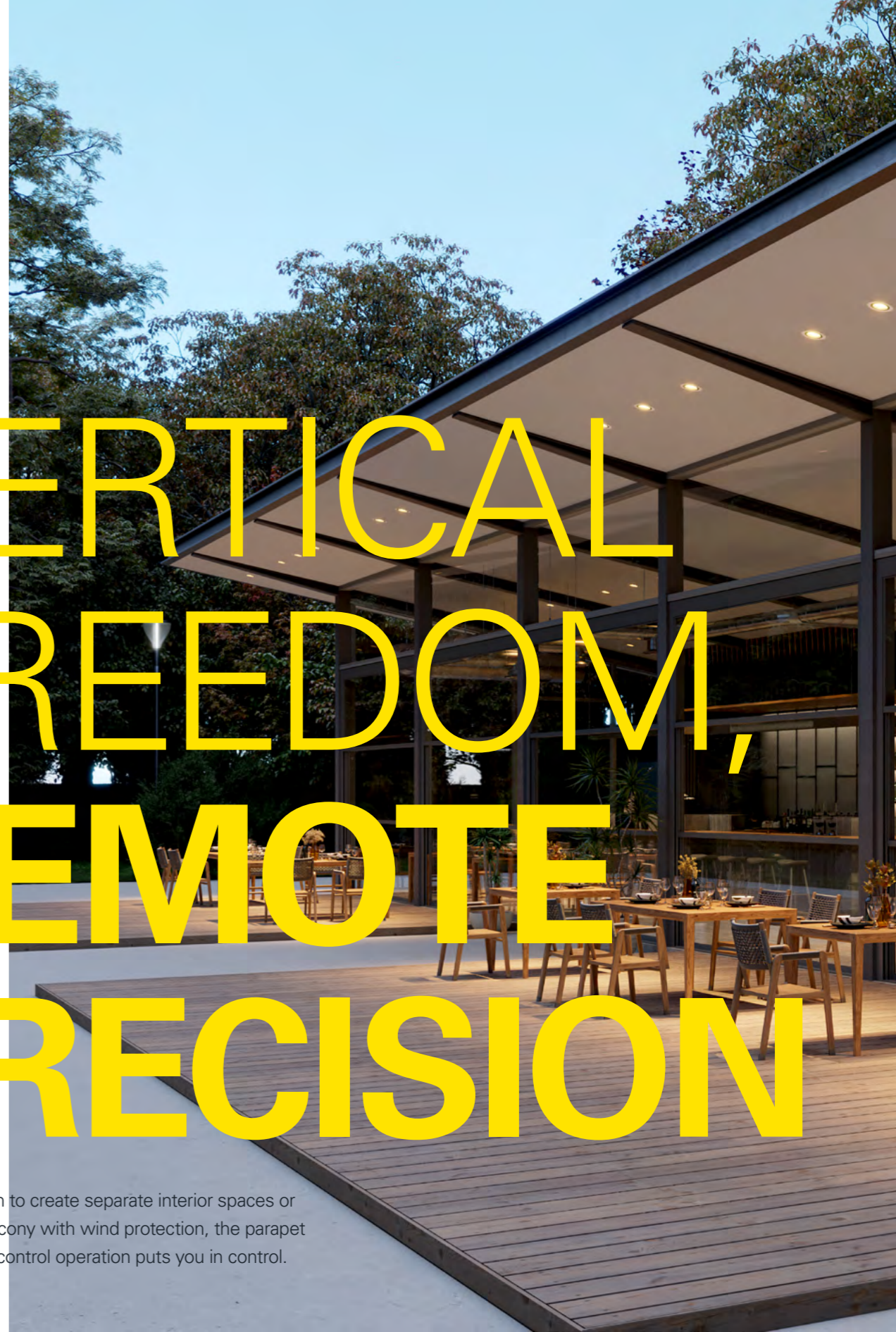
## ADJUSTABLE PARAPET SYSTEM

Parapet systems are systems that move vertically, used indoors as partitions and outdoors as railing and wind barrier systems. What sets it apart is the convenience of remote control, allowing you to adjust its configuration effortlessly to meet your needs.



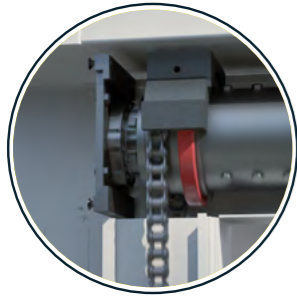
# VERTICAL FREEDOM, REMOTE PRECISION

Whether you wish to create separate interior spaces or enjoy an open balcony with wind protection, the parapet system's remote control operation puts you in control.





## PRECISION AND SAFETY COMBINED REINVENTING OUTDOOR SAFETY



**Chain Gear Mechanism**  
Safer under high loads.



**Panel Alignment Mechanism**



**Durable Chain**

- High stabilization
- Under typical working conditions, durable chains are more stable than belts and show better cycle performance as well.

**NEW  
UPGRADE**

The improved Adjustable Parapet system now features a robust chain gear mechanism for enhanced safety under high loads and a panel alignment mechanism for perfect alignment. The durable chain provides superior stability compared to belts, making the system more secure, stable, and efficient for all your outdoor needs.



## SECURING EVERY STEP: ADVANCED FEATURES OF THE ENHANCED ADJUSTABLE PARAPET



**Panel Drop Safety Mechanism**  
Activated in case of chain breakage



**Side Panel Safety Plastic**  
Prevent any object or fingers jamming on side covers



**Safety Edge**  
Prevent foot trapping at the bottom

**NEW  
UPGRADE**

The enhanced Adjustable Parapet system now features crucial safety upgrades: a Panel Drop Safety Mechanism for chain breaks, a Safety Edge to prevent foot trapping, and Side Panel Safety Plastic to avoid object and finger jams. These improvements ensure the system is safer and more reliable for all users.





## SEAMLESS DISASSEMBLY IMPROVED ACCESSIBILITY IN THE ADJUSTABLE PARAPET

**NEW  
UPGRADE**

The Adjustable Parapet system now features easier disassembly, improved technical service, reduced gaps between wheels and pillars for balanced movement, and securely fixed covers with extended profile fins, enhancing overall functionality and reliability.



**Tech. Service Availability**  
Easy to disassemble



**Side Wheels Revision**

- Decreased gap between wheels and pillars
- Increased balanced movement

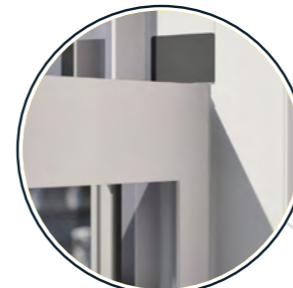


**Covers are Fixed Properly**  
With extended profile fins

## MODERN LOOK VISUAL CLARITY AND FUNCTIONALITY IN THE ADJUSTABLE PARAPET

**NEW  
UPGRADE**

The Adjustable Parapet system now features thicker corner brackets for durability, cataphoresis application for corrosion prevention, and improved visual clarity between glass and profile, enhancing its aesthetics and functionality.

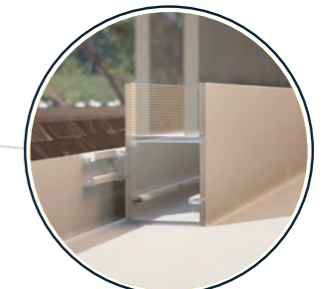


**Fit Corner Joint**

- Improved production process
- Increased Thickness of the corner bracket



**Cataphoresis Application**  
Prevent corrosion



**Best Visual View**  
Between Glass / Profile





## TECHNICAL FEATURES

### DIMENSIONS

		2 Panels Motorized			
Width	150-400 cm	150-375 cm	150-350 cm	150-325 cm	150-300 cm
Height (max.)	200 cm	225 cm	250 cm	275 cm	300 cm

		3 Panels Motorized			
Width	150-400 cm	150-375 cm	150-350 cm	150-325 cm	150-300 cm
Height (max.)	300cm	325 cm	350 cm	375 cm	400 cm

Maximum Height varies according to width correlation.

### GLASS OPTIONS

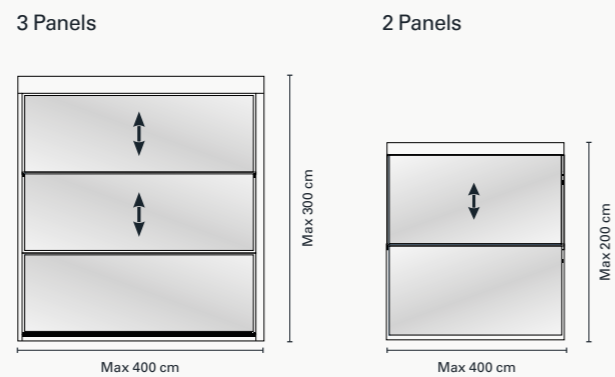
	3 Panels	2 Panels
Motorized Single Glass	8 mm Tempered	8 mm Tempered
Motorized Double Glass	5+12+5 Tempered	5+12+5 Tempered

### GLASS COLOR OPTIONS

- Transparent
- Green
- Smoked
- Satine
- Opaque

## CONFIGURATIONS

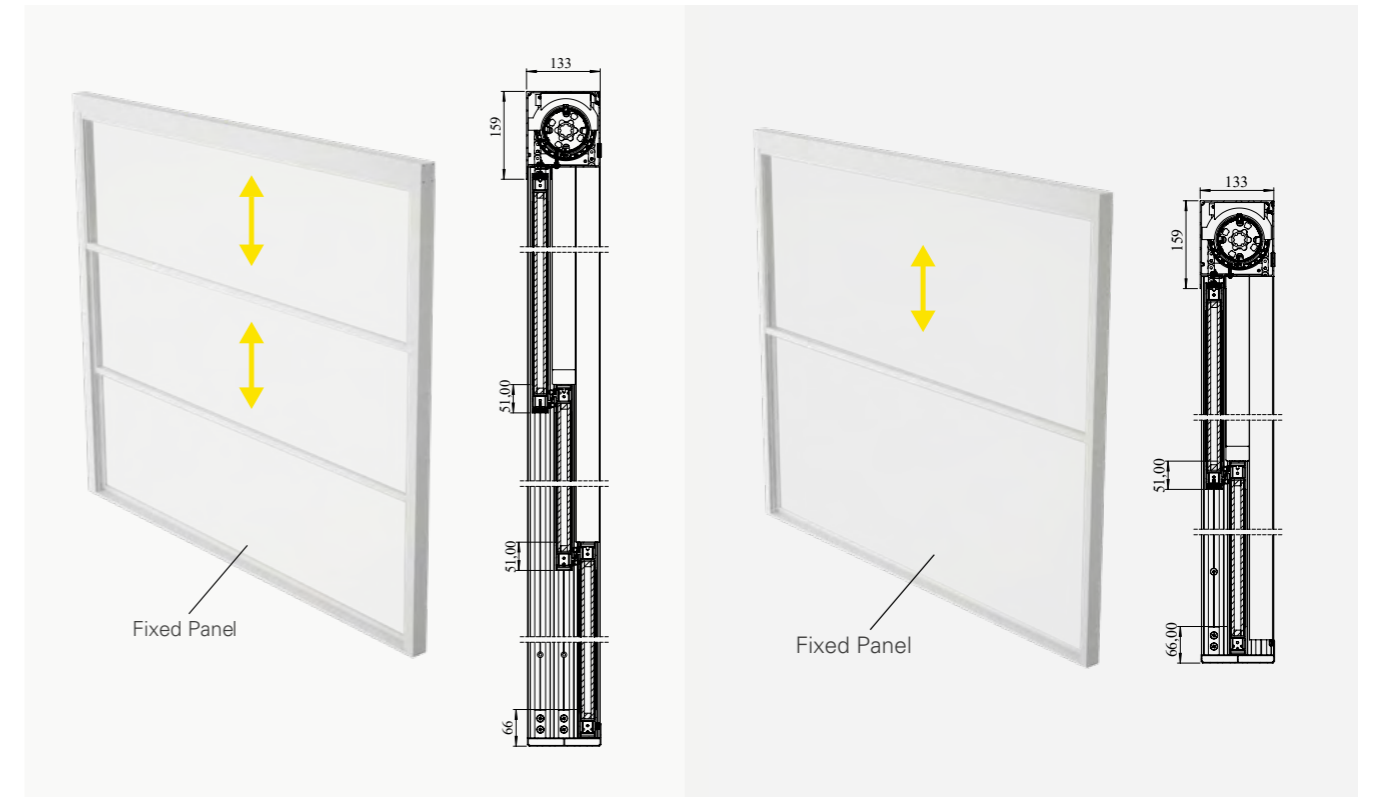
Operating vertically this parapet system can function interiorly as a room divider, and exteriorly as a balcony and wind breaker.



## PANEL TYPE

### 3 Panel Product

### 2 Panel Product





## CONTROL & AUTOMATION

Designed to easily control your product wherever you are in the world, despite the weather changes you can remotely activate your products accordingly.

Compatible with iOS and Android smartphone systems. You can assign multiple functions through created scenarios, you can give a one-touch command.



## TAILORED TO YOUR LIFESTYLE!

Our products incorporate Somfy motors, remote controls, sensors, and automation systems, giving customers the choice between RTS and IO options.



### SITUO 1&5

Elegant design that allows you to easily control your product.

The standard control unit.



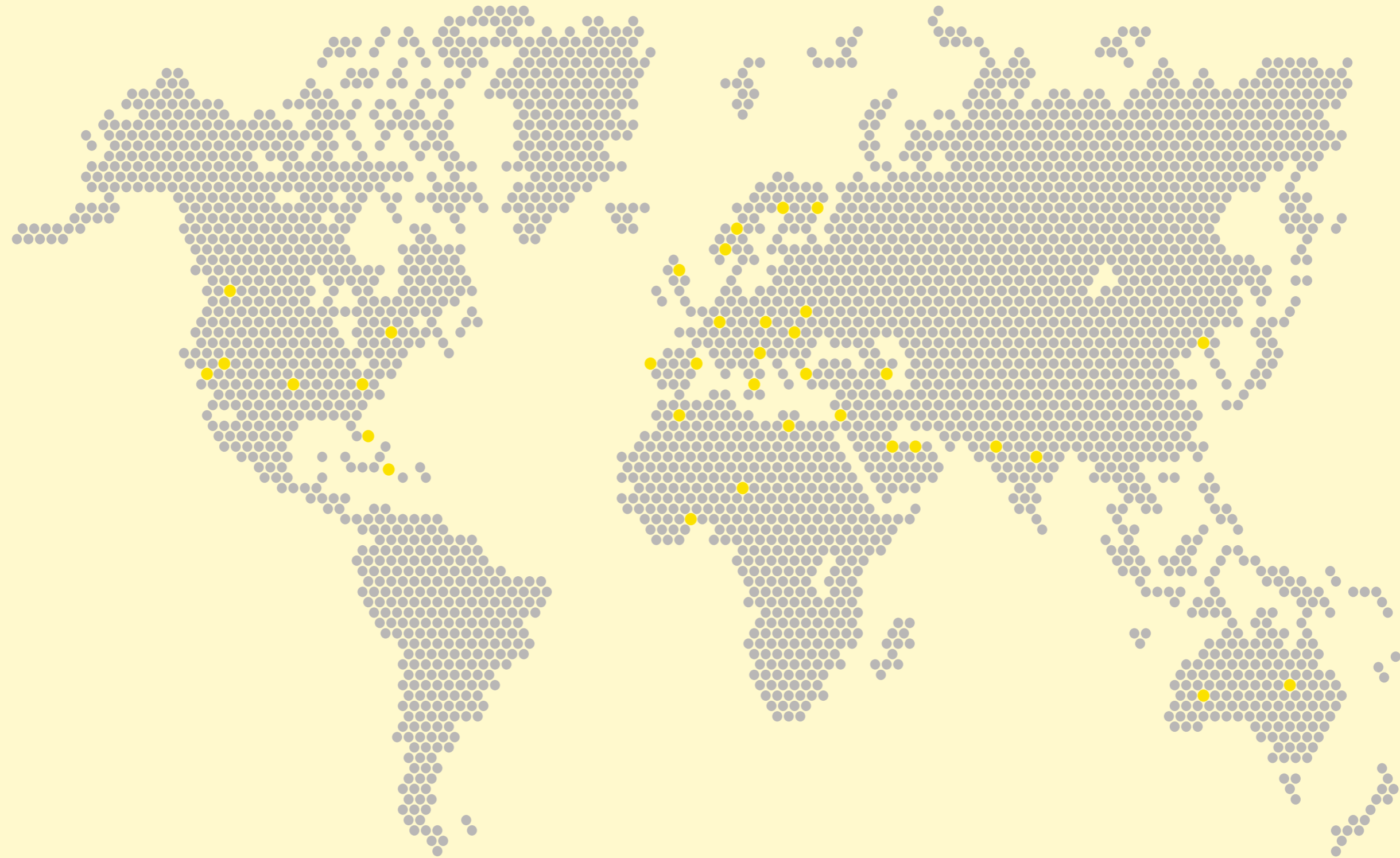
### TELIS 16

16 Channel ergonomic design that allows you to control all functions at the same time from one control.

The standard control unit.







# GLOBAL NETWORK

Palmiye is represented in many countries world wide and the values of each and every culture combined with unique architectural concepts, inspires and is reflected in Palmiye' s products.

**HEAD OFFICE & FACTORY**  
Osmangazi Mah. 2647. Sok. No: 33/1  
Esenyurt 34522 Istanbul - Türkiye  
Phone: +90 212 886 7474  
[info@palmiyeglobal.com](mailto:info@palmiyeglobal.com)



